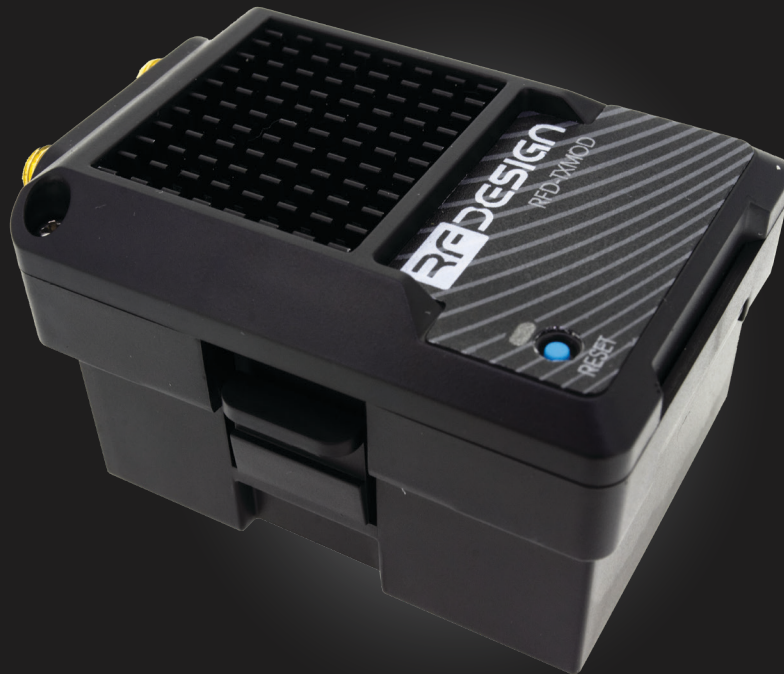


RFD TX Mod

Long-range telemetry & radio control expansion module



The RF Design TX Module is an all in one long range telemetry data and RC control system.

Designed to work in conjunction with any Radio Controller capable of accepting JR Transmitter Modules, the RFD TX Module can transmit the PPM stream from the controller to the vehicle via the

RFX900x long range telemetry modem while also receiving telemetry data received from the aircraft.

The Module's built in WiFi allows for simple webpage based configuration and broadcasting of telemetry data to a computer or smart device.



900x Telemetry modem with diversity



Wide range 5-18V input supply



Easy configuration with web-based wizard built in



Compatible with Mavlink



2.4GHz WiFi AP / Client modes with TCP + UDP packet support

FEATURES

Long range using RFX900x telemetry modem

WiFi host or client

Easy configuration by web-based wizard

Direct plug in to Taranis X9D controller

APPLICATIONS

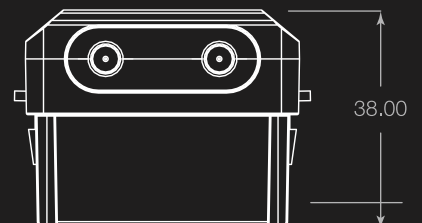
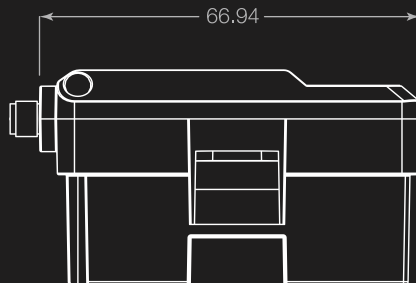
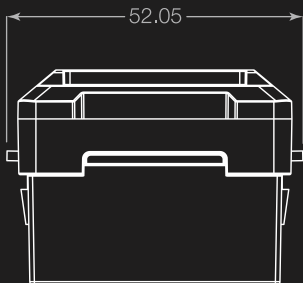
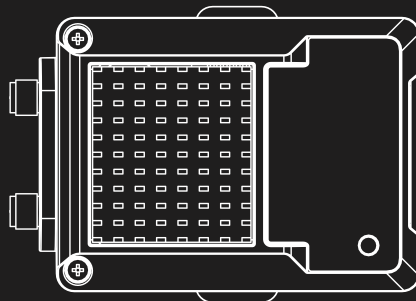
Long range remote control (RC) via PPM

Ground control station (GCS) telemetry gateway over WiFi



DIMENSIONS

In mm



7 / 1 Stockwell Place
Archerfield QLD 4108
Brisbane Australia

+61 3255 6042
info@rfdesign.com.au
www.rfdesign.com.au

RFD TX Mod
Long-range telemetry & radio
control expansion module